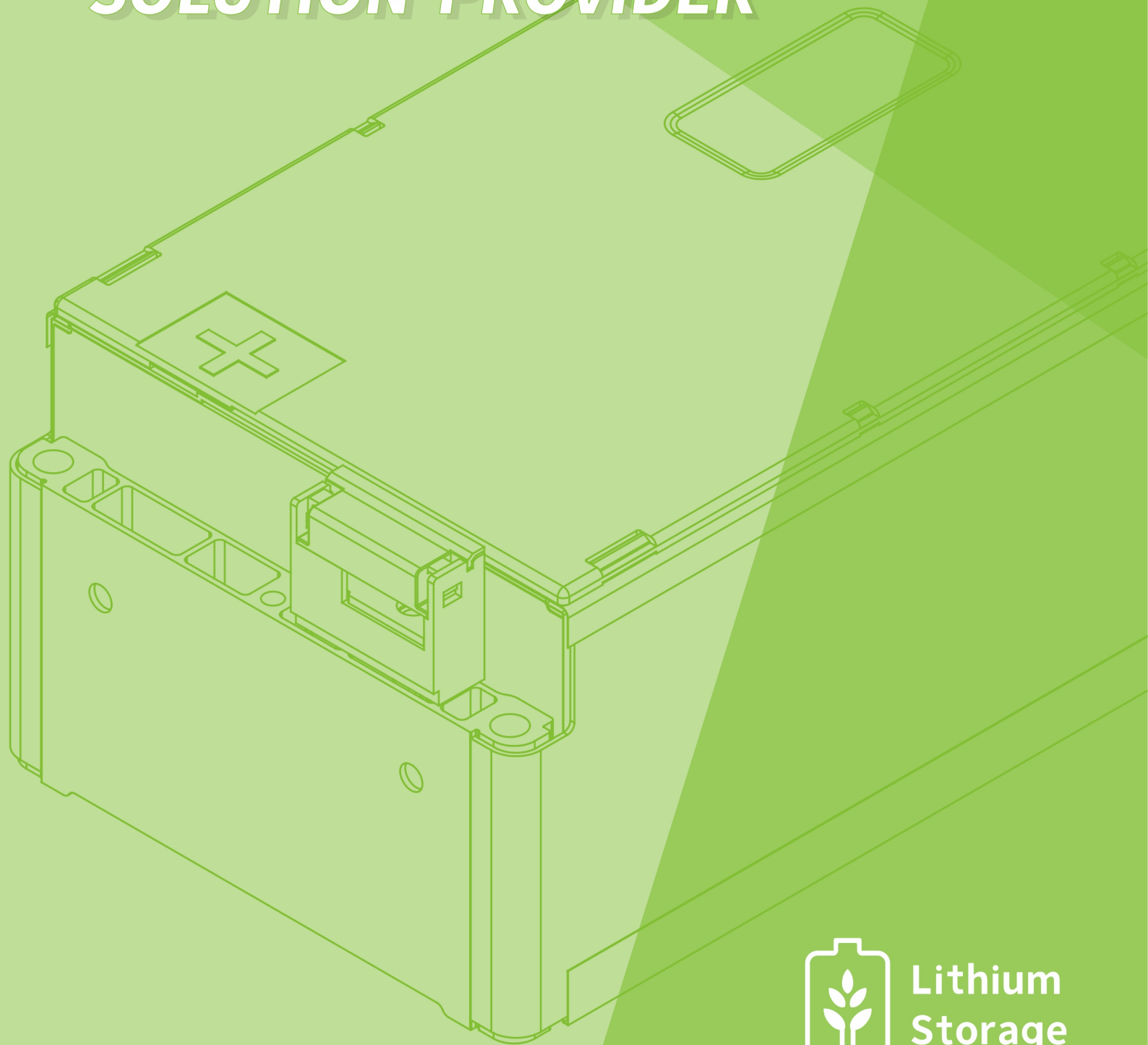
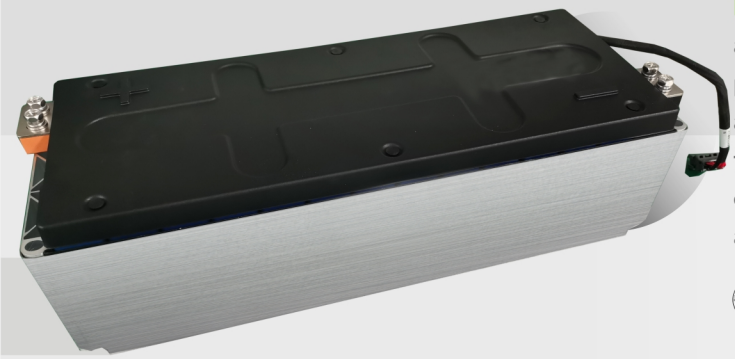


YOUR PROFESSIONAL LITHIUM BATTERY SOLUTION PROVIDER



**Lithium
Storage**

NCM 58AH 2P7S VDA MODULE

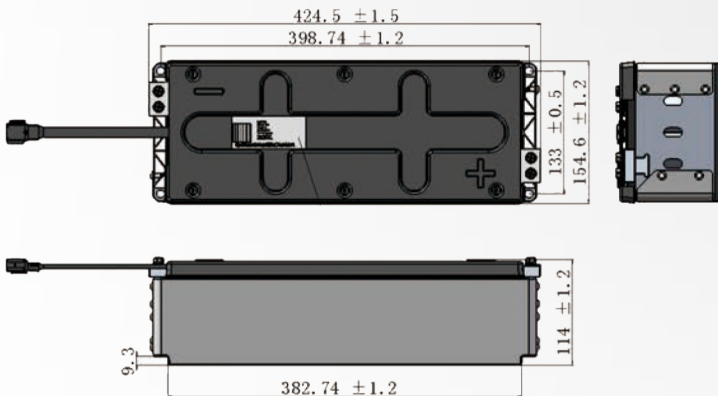
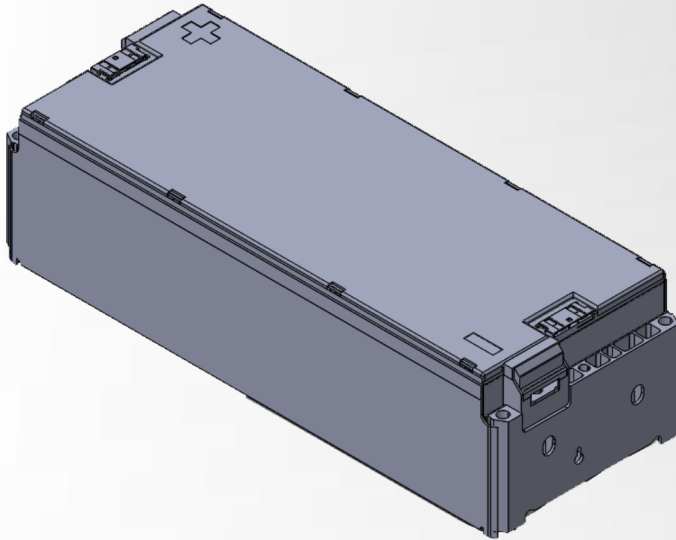


LITHIUM STORAGE supports offering standard battery modules and customization of battery modules based on LFP/NCM prismatic cells, including the structure of the banding module and frame welding module. The high structural strength of the frame welding module meets harsh vehicle operating conditions, and the high flexibility of the banding module meets a wide range of dimension requirements.



ITEM	SPECIFICATION	NOTE
Nominal voltage(V)	25.69	
Operating voltage(V)	min	19.25
	max	30.45
Nominal capacity(Ah)	116	25°C, 1/3C, 100%DOD
Nominal energy (KWh)	2.98	25°C, 1/3C, 100%DOD
Available energy (KWh)	≥2.219	
Group mode	2P7S	
End of life residual capacity (Ah)	81.6	Residual capacity ≥80% initial capacity, @25°C
Module weight (kg)	14.5	
Maximum continuous charge current (A)	92.8	0.8C, 15°C ≤ T < 20°C
Maximum short pulse charge current (≤10s)	139.2	20°C ≤ T < 45°C
Maximum continuous discharge current (A)	116	10°C ≤ T < 40°C
Maximum short pulse discharge current (≤10s) (A)	232	30S
SOC operating range (%)	5~97	
Insulation requirements(MΩ)	500	DC500V, 5S, 15°C-35°C, ≤70%RH
Module cooling method	Natural cooling	
Module heating method	No	
Shipping capacity (SOC)	≈30%	SOC is consistency in the same batch
Shipping consistency (mv)	<20	Voltage difference between cell of module <20mV
Coulomb efficiency	≥95%	
Module self-discharge	≤3%	25 ± 2°C, 50%SOC
Dimension L (mm)	424.5	
Dimension W (mm)	154.6	
Dimension H (mm)	114	

DRAWING



INTERFACE TYPE:CONNECTOR TYPE

Interface definition



JAE MX34012PF1

PIN	PIN Definition
12	B-00
1	B-01
11	B-02
2	B-03
10	B-04
3	B-05
9	B-06
4	B-07+
8	T1
5	
7	T2
6	

Battery Module	Connector Type	Pin Type	Note
NCM 58Ah 2P7S module	JAE MX34012SF1	M34S75C4F1, 22-24AWG	A connector corresponds to 12 PINS

ADVANTAGE

- 355 VDA battery module.
- High quality standard of production and performance meeting supply requirements of passenger vehicles.
- Uninterrupted supply guaranteed by the stable mass production.
- Continuously improved energy density through new materials and light weighting technology.
- Suitable for passenger vehicles and commercial vehicles etcetera.



Lithium Storage

- ✉ info@lslithiumbattery.com
- 🌐 www.lslithiumbattery.com
- 📍 Nanjing office | Wenzhou Factory | UK Branch
- ☎ +86-(0)25-87736807
- ☎ +86-(0)25-87739887