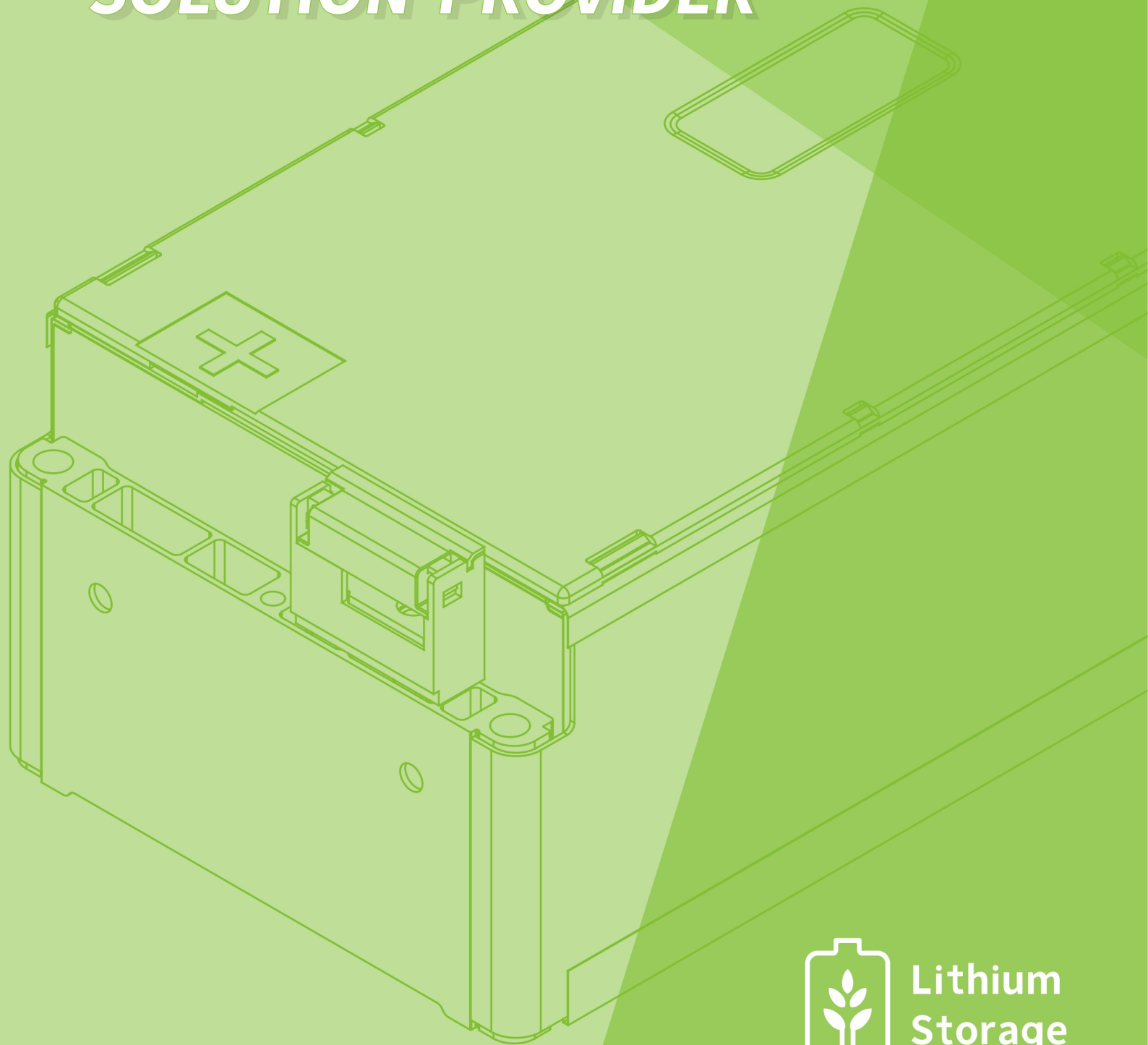


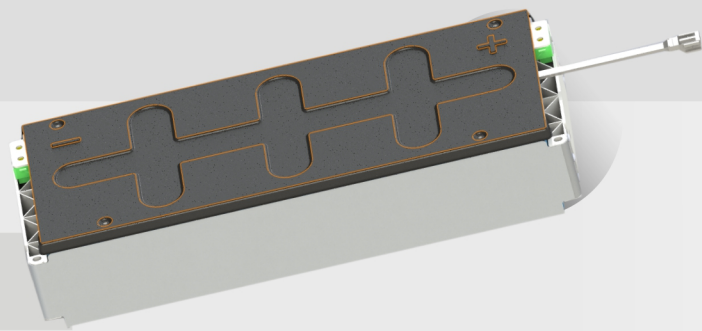
YOUR PROFESSIONAL LITHIUM BATTERY SOLUTION PROVIDER



Lithium
Storage

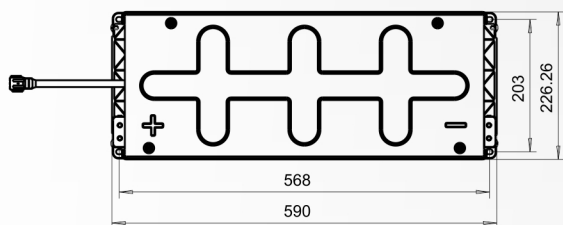
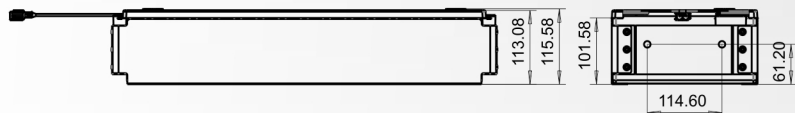
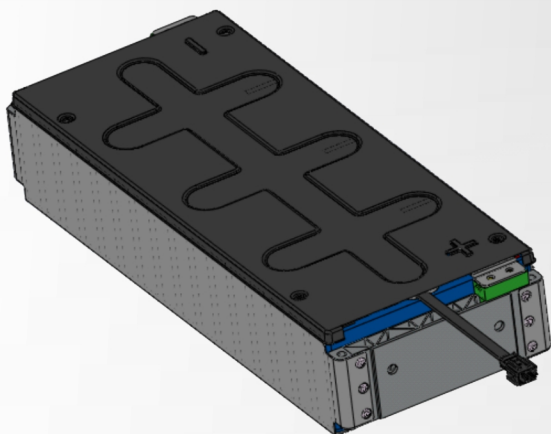
NCM 113AH 2P8S 590 MODULE

LITHIUM STORAGE supports offering standard battery modules and customization of battery modules based on LFP/NCM prismatic cells, including the structure of the banding module and frame welding module. The high structural strength of the frame welding module meets harsh vehicle operating conditions, and the high flexibility of the banding module meets a wide range of dimension requirements.



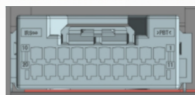
ITEM	SPECIFICATION	NOTE
Nominal voltage(V)	29.36	1C
Operating voltage(V)	min	T > 0°C
	max	34.8
Nominal capacity(Ah)	227	25°C, 1C, 100%DOD
Nominal energy (KWh)	6.64	25°C, 1C, 100%DOD
Available energy (KWh)	≥2.219	
Group mode	2P8S	
Module weight (kg)	31.4	
Maximum continuous charge current (A)	227	1C 10°C-45°C
Maximum short pulse charge current (≤10s)	227	
Working temperature	-20~55°C	Charging temperature
	-30~55°C	Discharging temperature
SOC operating range (%)	0%~95%	0~20000 km
	0%~95%	2~40000 km
	3%~95%	>40000 km
Insulation requirements(MΩ)	500	DC500V, 5S, 15°C-35°C, ≤70%RH
DCR	≤5mΩ	@25°C, 300A (Discharging), 10s, 70%SOC, BOL
	≤5mΩ	@25°C, 300A (Charging), 10s, 70%SOC, BOL
Module cooling method	Natural cooling	
Module heating method	No	
Shipping capacity (SOC)	≈30%	SOC is consistency in the same batch
Dimension L (mm)	590	
Dimension W (mm)	226.26	
Dimension H (mm)	115.58	

DRAWING



INTERFACE TYPE:CONNECTOR TYPE

Interface definition



IRISO 13065B-2-20A-TR

PIN	PIN Definition	PIN	PIN Definition
1	GND	11	V0
2	V4	12	V2
3	NTC2-	13	NTC2+
4	NA	14	V6
5	PWR	15	V8
6	NA	16	NA
7	NA	17	NA
8	NTC1-	18	NTC1+
9	V5	19	V7
10	V1	20	V3

Battery Module	Connector Type	Pin Type	Note
NCM 113Ah 2P8S module	IMSA-13065S-2-20A	13065T-01A-T	A connector corresponds to 20 PINS

ADVANTAGE

- 590 MEB battery module.
- High quality standard of production and performance meeting supply requirements of passenger vehicles.
- Uninterrupted supply guaranteed by the stable mass production.
- Continuously improved energy density through new materials and light weighting technology.
- Suitable for passenger vehicles and commercial vehicles etcetera.



Lithium Storage

✉ info@lslithiumbattery.com

🌐 www.lslithiumbattery.com

📍 Nanjing office | Wenzhou Factory | UK Branch

☎ +86-(0)25-87736807

📞 +86-(0)25-87739887